

| | | | |
|--------------|-------------------|----|------|
| PLAN | SURVEYED | BY | DATE |
| NOTEBOOK NO. | REVIEWED ROW/CHKD | | |

| | | | |
|--------------|------------------------|----|------|
| PROFILE | SURVEYED | BY | DATE |
| NOTEBOOK NO. | REVIEWED NOTES REDUCED | | |

This document and any attachments are considered:
BUSINESS CONFIDENTIAL
PROTECTED CRITICAL INFRASTRUCTURE INFORMATION

ROCHESTER (CENTRAL) DISTRICT - WESTERN MONROE REGION

**Figure 5-2
Cross Sections**

Rochester Transmission Project Enhancement
Monroe County, NY

| | | | |
|--------------|----------------|------------|-----|
| OHSW TYPE | CONDUCTOR TYPE | YR. CONST. | W/O |
| TENSION | TENSION | NOTES: | |
| DESIGN TEMP. | DESIGN TEMP. | | |

| | | | | |
|------|------|----|-------------|------|
| REV. | DATE | BY | DESCRIPTION | APP. |
| | | | | |

| |
|----------|
| PE Stamp |
|----------|

| | | | | |
|---|----------|------|------------------|------|
| AVANGRID ENGINEERING CONFIDENTIAL, PROPRIETARY and TRADE SECRET INFORMATION Property of AVANGRID | | | | |
| 0-0A | 12/06/19 | MLEC | ISSUE FOR REVIEW | |
| REV. | DATE | BY | DESCRIPTION | APP. |
| | | | | |

| | | | |
|--|--|--------------------|---------------------------|
| LINE 949 CROSS SECTION OVERVIEW DRAWING | | SCALE NTS NO. | FILE: R0001-T949-000A.DWG |
| 115KV LINE 949 | | DR. ASW CK. MSP | REV. 0-0A |
| R0001-T949-6013 | | DATE: 12/06/19 | |

CADD Drawing, DO NOT REVISE MANUALLY.

CADD Drawing, DO NOT REVISE MANUALLY.

ANSI B

SEGMENT

STATION 418 TO TRABOLD RD CROSSING

1.01 MILES

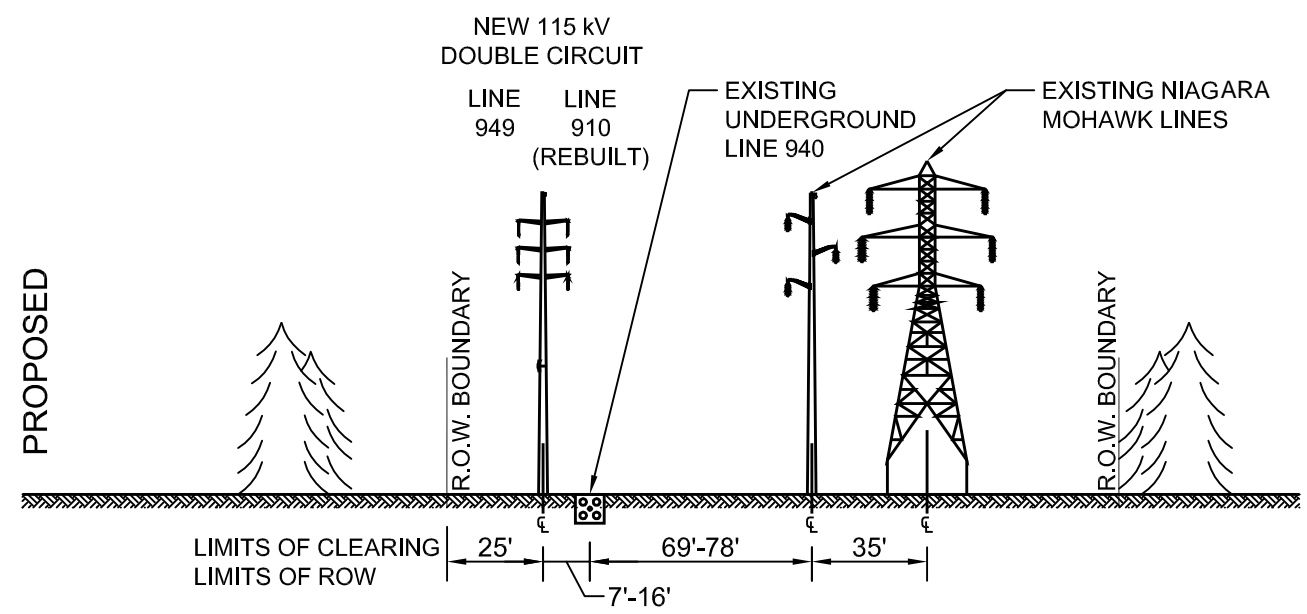
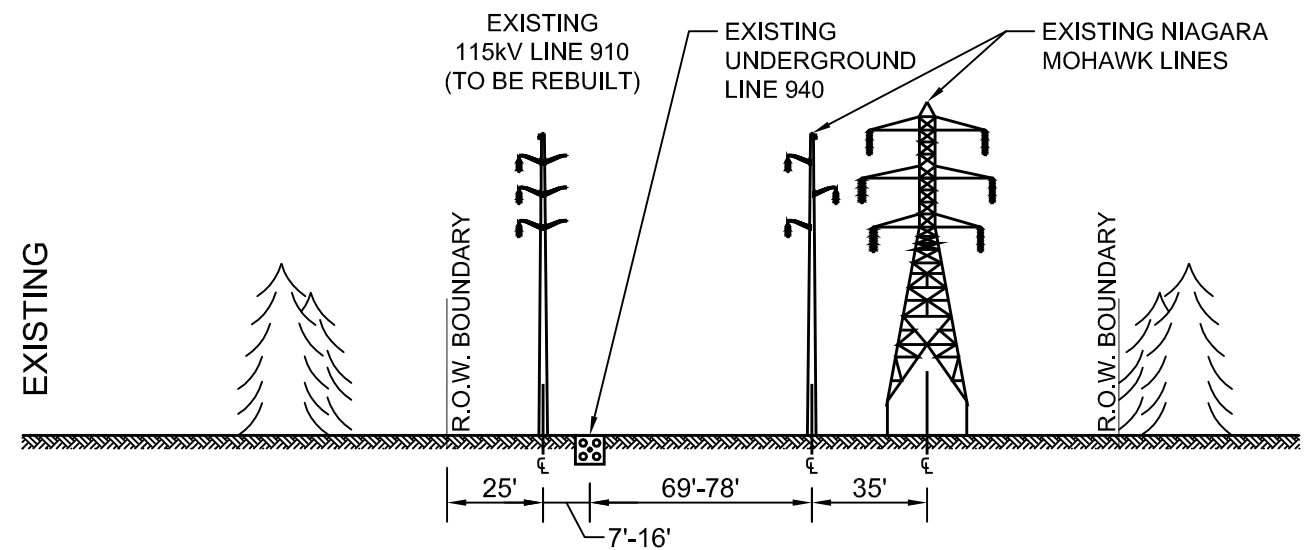


Figure 5-2
Cross Sections

Rochester Transmission Project Enhancement
Monroe County, NY

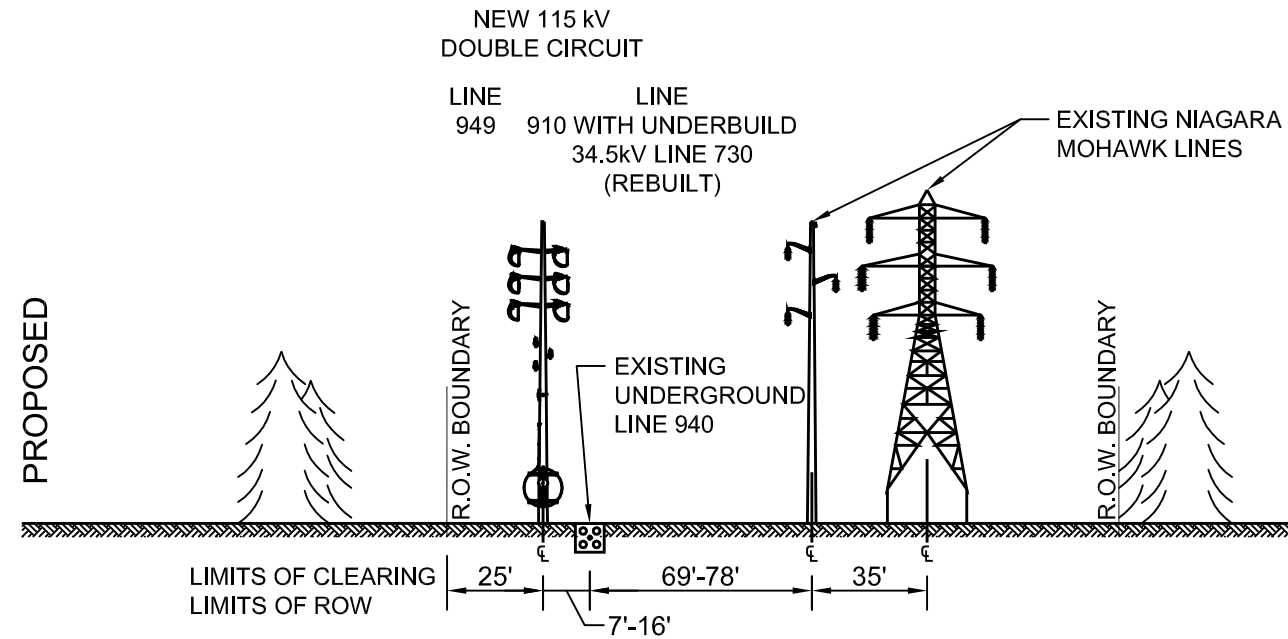
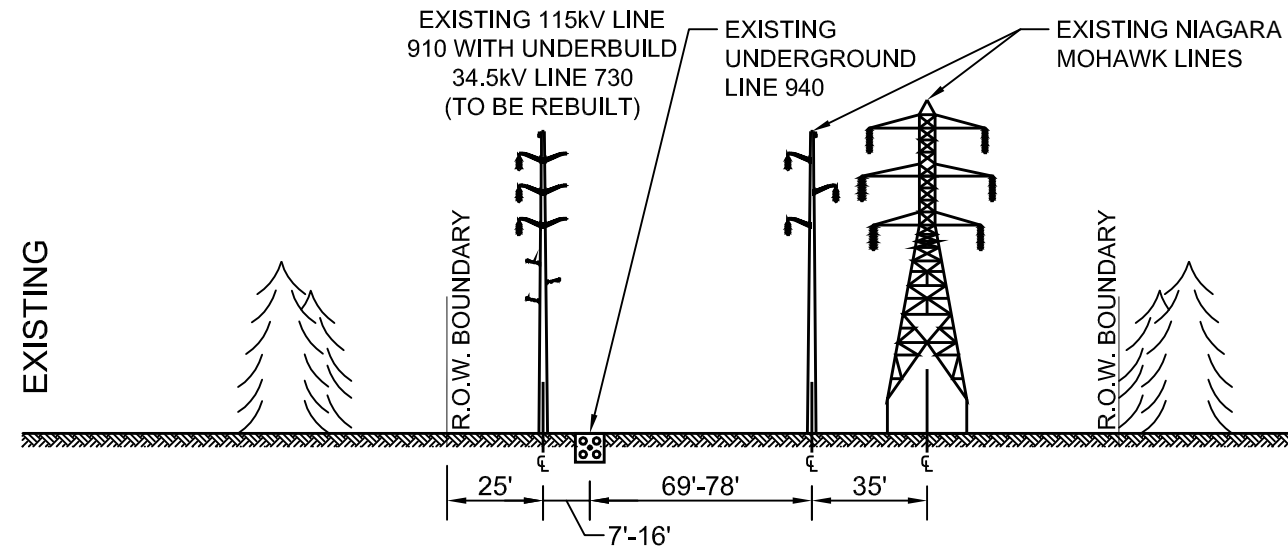
| | |
|----------------------|-----------------|
| OWNER ENGINEER: | APPROVAL STAMP: |
| DRAWING PREPARED BY: | ACCEPTED BY OE: |

| | | | | | |
|----------|---|------|------------------|------|---------------|
| PE Stamp | AVANGRID ENGINEERING CONFIDENTIAL, PROPRIETARY and TRADE SECRET INFORMATION Property of AVANGRID | | | | |
| | | | | | |
| | | | | | |
| | | | | | |
| 0-0A | 8/14/19 | MLEC | ISSUE FOR REVIEW | | |
| REV. | DATE | BY | DESCRIPTION | APP. | DATE: 8/14/19 |

| | | | |
|---|-----|------------------------|---------------------------|
| 115 kV LINE 949 SECTION 1 (LOOKING TOWARD STATION 48) | | | |
| ROCHESTER | | | |
| DR. | RSH | SCALE: N/A | FILE: R0001-T949-6000.dwg |
| CK. | MSP | R0001-T949-6000 | |
| APP. | | | |
| REV. | | NO. | 0-0A |

SEGMENT

TRABOLD RD CROSSING TO 2 SPANS SOUTH OF TRABOLD RD
.12 MILES



CADD Drawing, DO NOT REVISE MANUALLY.

ANSI B

**Figure 5-2
Cross Sections**

Rochester Transmission Project Enhancement
Monroe County, NY

OWNER ENGINEER:

APPROVAL STAMP:

DRAWING PREPARED BY:

ACCEPTED BY OE:

PE Stamp

AVANGRID ENGINEERING
CONFIDENTIAL, PROPRIETARY and TRADE SECRET INFORMATION
Property of AVANGRID



**115 kV LINE 949
SECTION 2**
(LOOKING TOWARD STATION 48)

ROCHESTER

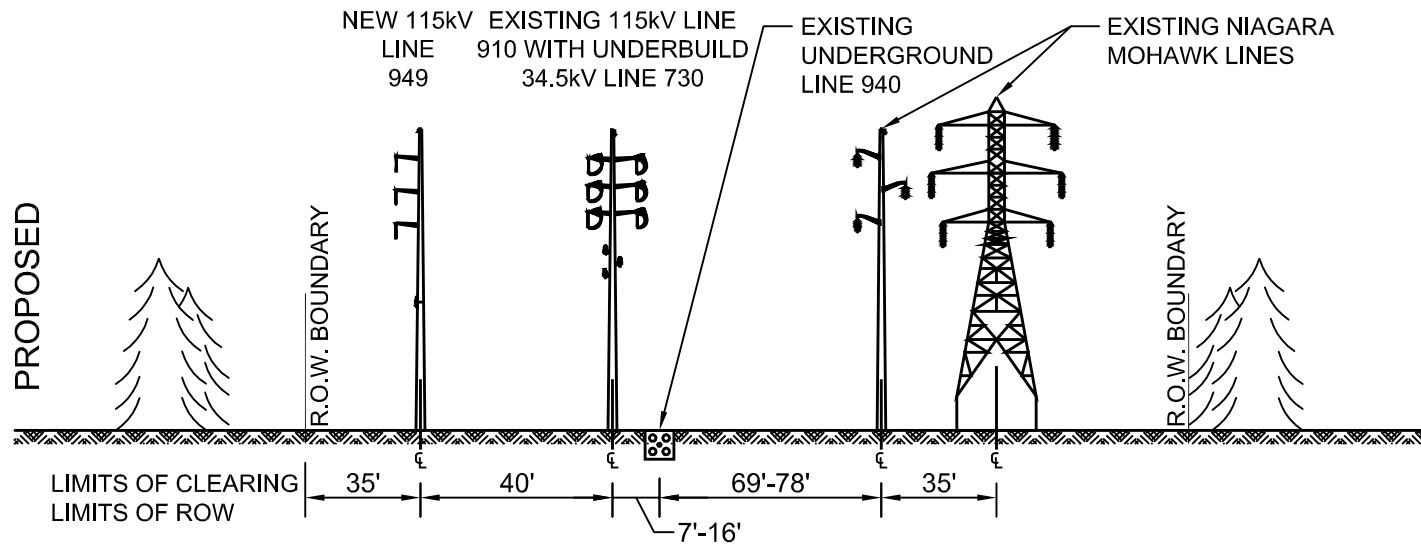
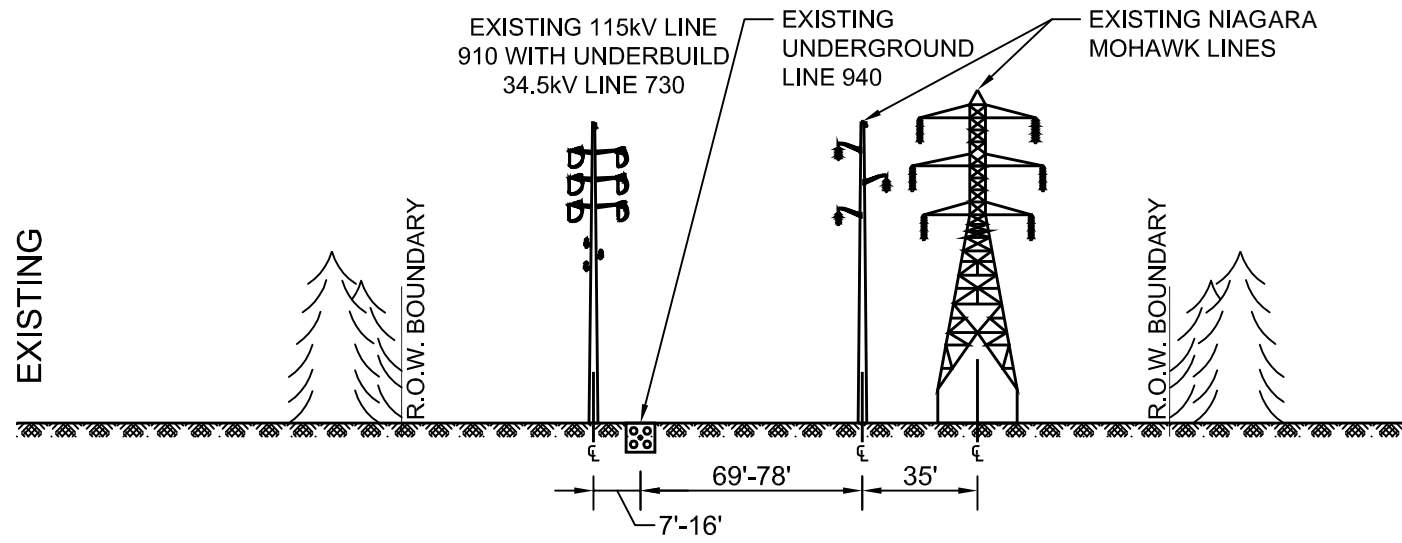
| REV. | DATE | BY | DESCRIPTION |
|------|---------|------|------------------|
| 0-0A | 8/14/19 | MLEC | ISSUE FOR REVIEW |

| | | | |
|---------------|-----|------------|---------------------------|
| DR. | RSB | SCALE: N/A | FILE: R0001-T949-6001.dwg |
| CK. | MSP | NO. | |
| APP. | | | |
| DATE: 8/14/19 | | | |

R0001-T949-6001 0-0A

SEGMENT

2 SPANS SOUTH OF TRABOLD RD TO LINE 940 RISER
.14 MILES



ANSI B CADD Drawing, DO NOT REVISE MANUALLY.

**Figure 5-2
Cross Sections**

Rochester Transmission Project Enhancement
Monroe County, NY

OWNER ENGINEER:

APPROVAL STAMP:

DRAWING PREPARED BY:

ACCEPTED BY OE:

PE Stamp

AVANGRID ENGINEERING
CONFIDENTIAL, PROPRIETARY and TRADE SECRET INFORMATION
Property of AVANGRID



**115 kV LINE 949
SECTION 3**

(LOOKING TOWARD STATION 48)

ROCHESTER

| | | | |
|------|---------|------|------------------|
| 0-0A | 8/14/19 | MLEC | ISSUE FOR REVIEW |
|------|---------|------|------------------|

| REV. | DATE | BY | DESCRIPTION |
|------|------|----|-------------|
|------|------|----|-------------|

APP.

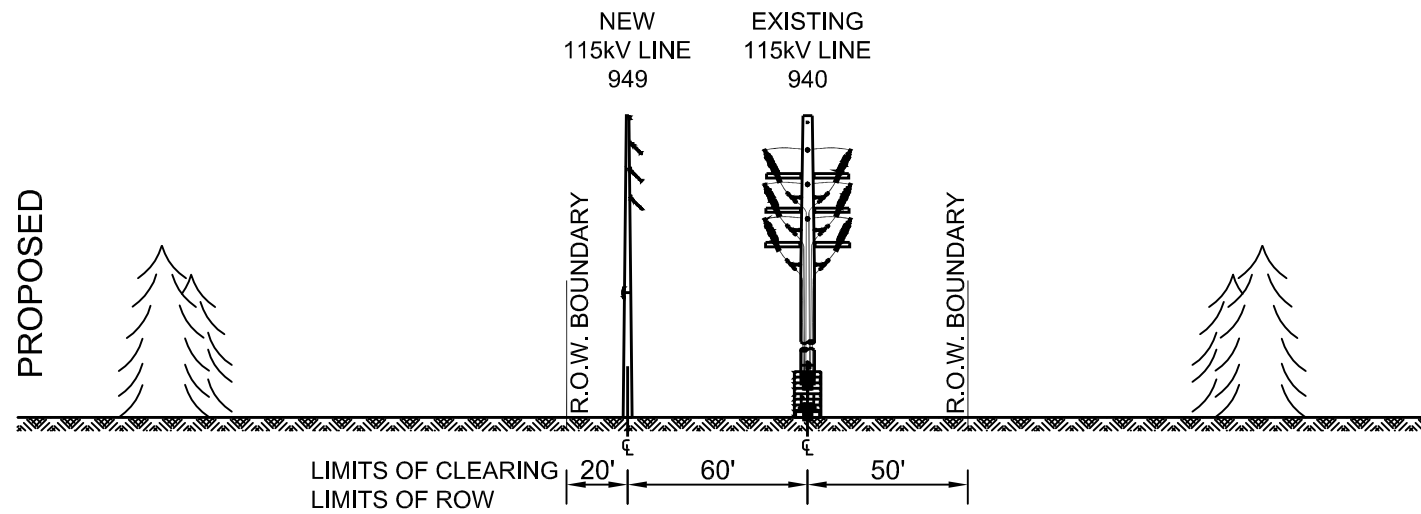
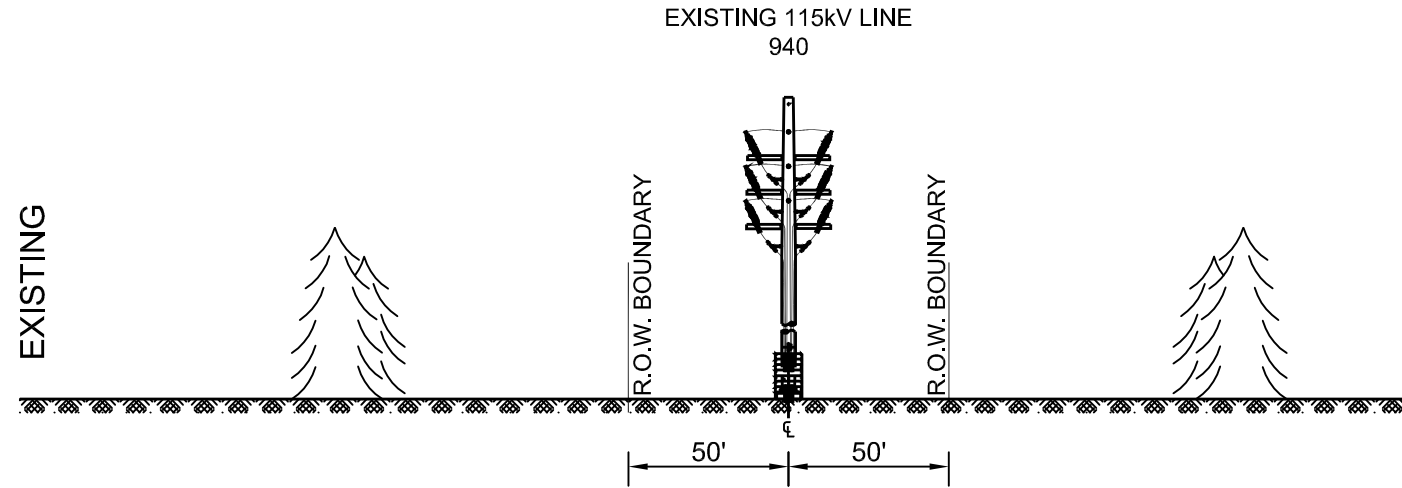
| | | | |
|-------|---------|------------|---------------------------|
| DR. | RSH | SCALE: N/A | FILE: R0001-T949-6002.dwg |
| CK. | MSP | NO. | |
| APP. | | | |
| DATE: | 8/14/19 | | |

R0001-T949-6002

REV.
0-0A

SEGMENT

LINE 940 RISER TO CSX RAILROAD
.06 MILES



CADD Drawing, DO NOT REVISE MANUALLY.

ANSI B

**Figure 5-2
Cross Sections**

Rochester Transmission Project Enhancement
Monroe County, NY

| | |
|----------------------|-----------------|
| OWNER ENGINEER: | APPROVAL STAMP: |
| DRAWING PREPARED BY: | ACCEPTED BY OE: |

PE Stamp

AVANGRID ENGINEERING
CONFIDENTIAL, PROPRIETARY and TRADE SECRET INFORMATION
Property of AVANGRID



115 kV LINE 949
SECTION 4
(LOOKING TOWARD STATION 48)

ROCHESTER

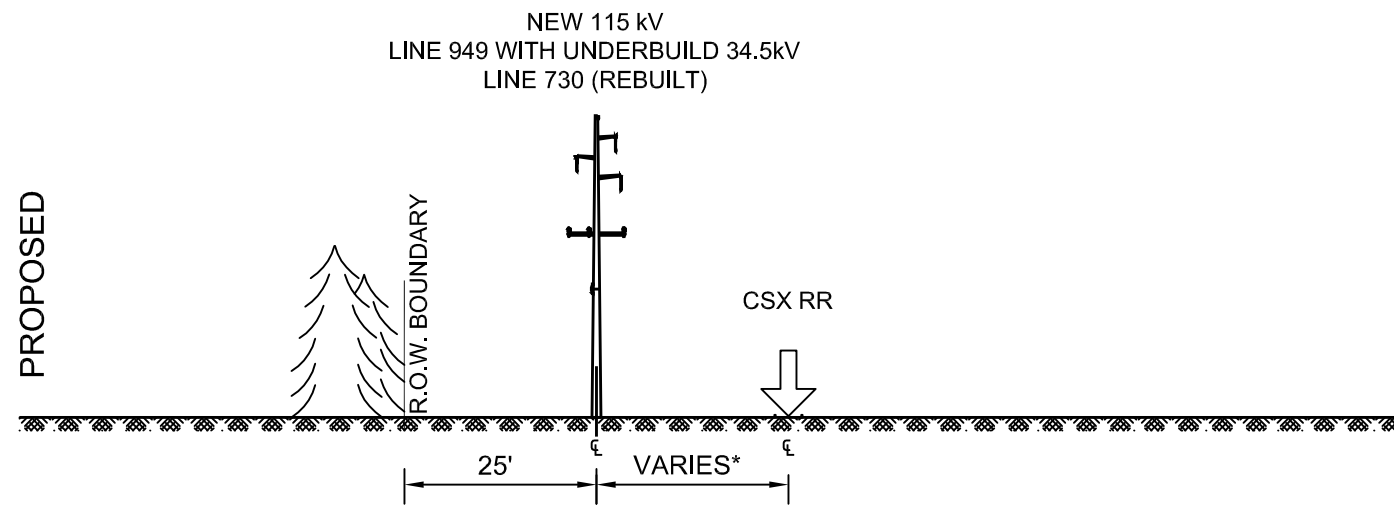
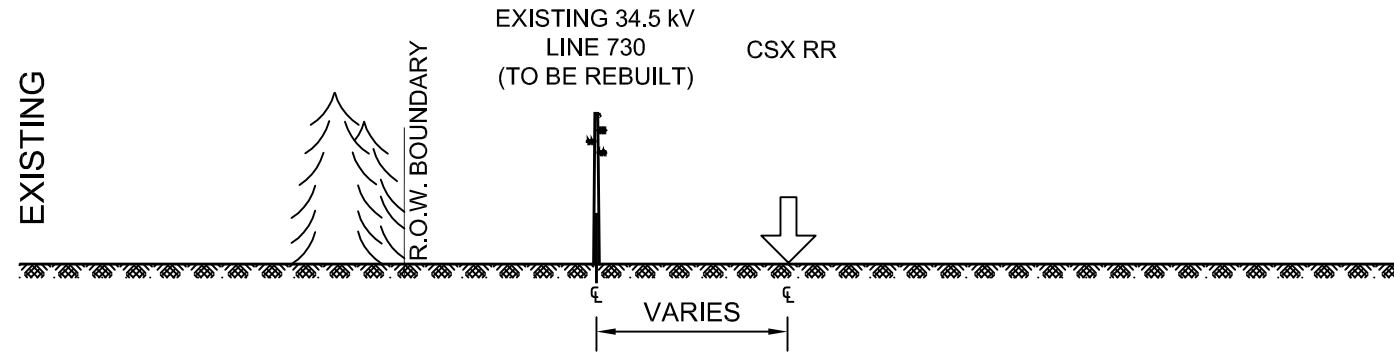
| | | | | | |
|------|---------|------|------------------|------|--|
| | | | | | |
| | | | | | |
| | | | | | |
| 0-0A | 8/14/19 | MLEC | ISSUE FOR REVIEW | | |
| REV. | DATE | BY | DESCRIPTION | APP. | |

| | | | |
|---------------|-----|------------|---------------------------|
| DR. | RSH | SCALE: N/A | FILE: R0001-T949-6003.dwg |
| CK. | MSP | NO. | |
| APP. | | | |
| DATE: 8/14/19 | | | |

R0001-T949-6003 REV. 0-0A

SEGMENT

CSX RAILROAD TO HOWARD RD CROSSING
1.62 MILES



*THE DISTANCE FROM THE TRANSMISSION CENTERLINE TO THE CSX RR VARIES, EITHER EXCEEDING CSX'S REQUIREMENT OF 25' BETWEEN EDGE OF RAIL TO EDGE OF POLE/FOUNDATION OR AS MUCH AS POSSIBLE DUE TO AVAILABLE ROW.

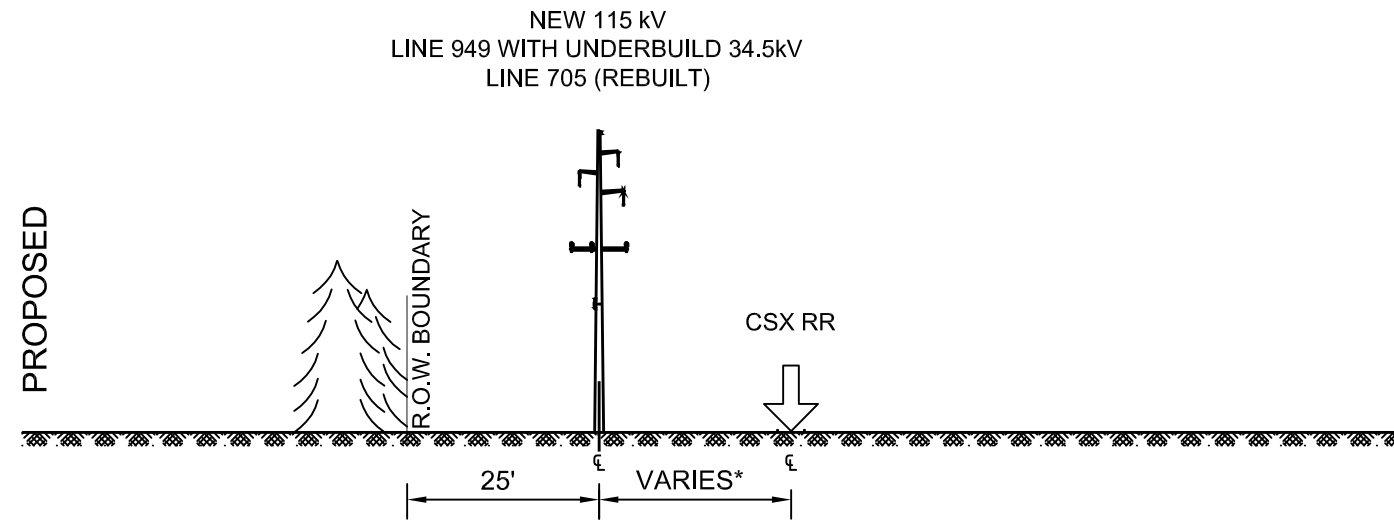
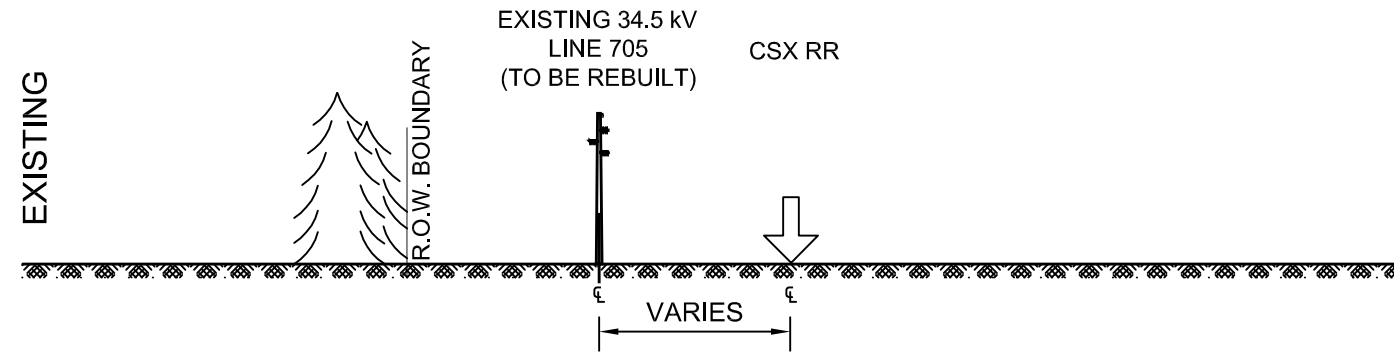
CADD Drawing, DO NOT REVISE MANUALLY.

ANSI B

| | | | | | | | | | |
|---|----------------------|-----------------|---|----|---|------|---------------|---------------------------|--------------|
| Figure 5-2 Cross Sections Rochester Transmission Project Enhancement Monroe County, NY | OWNER ENGINEER: | APPROVAL STAMP: | PE Stamp AVANGRID ENGINEERING CONFIDENTIAL, PROPRIETARY and TRADE SECRET INFORMATION Property of AVANGRID | | 115 kV LINE 949 SECTION 5 (LOOKING TOWARD STATION 48) | | | | |
| | DRAWING PREPARED BY: | ACCEPTED BY OE: | | | ROCHESTER | | | | |
| | | | | | DR. | RSH | SCALE: N/A | FILE: R0001-T949-6004.dwg | |
| | | | | | CK. | MSP | NO. | | |
| | | APP. | | | | | | | |
| | | REV. | DATE | BY | DESCRIPTION | APP. | DATE: 8/14/19 | R0001-T949-6004 | REV. 0-0A |

SEGMENT

HOWARD RD CROSSING TO LINE 926 & 916 CORRIDOR
.95 MILES



*THE DISTANCE FROM THE TRANSMISSION CENTERLINE TO THE CSX RR VARIES, EXCEEDING CSX'S REQUIREMENT OF 25' BETWEEN EDGE OF RAIL TO EDGE OF POLE/FOUNDATION.

CADD Drawing, DO NOT REVISE MANUALLY.

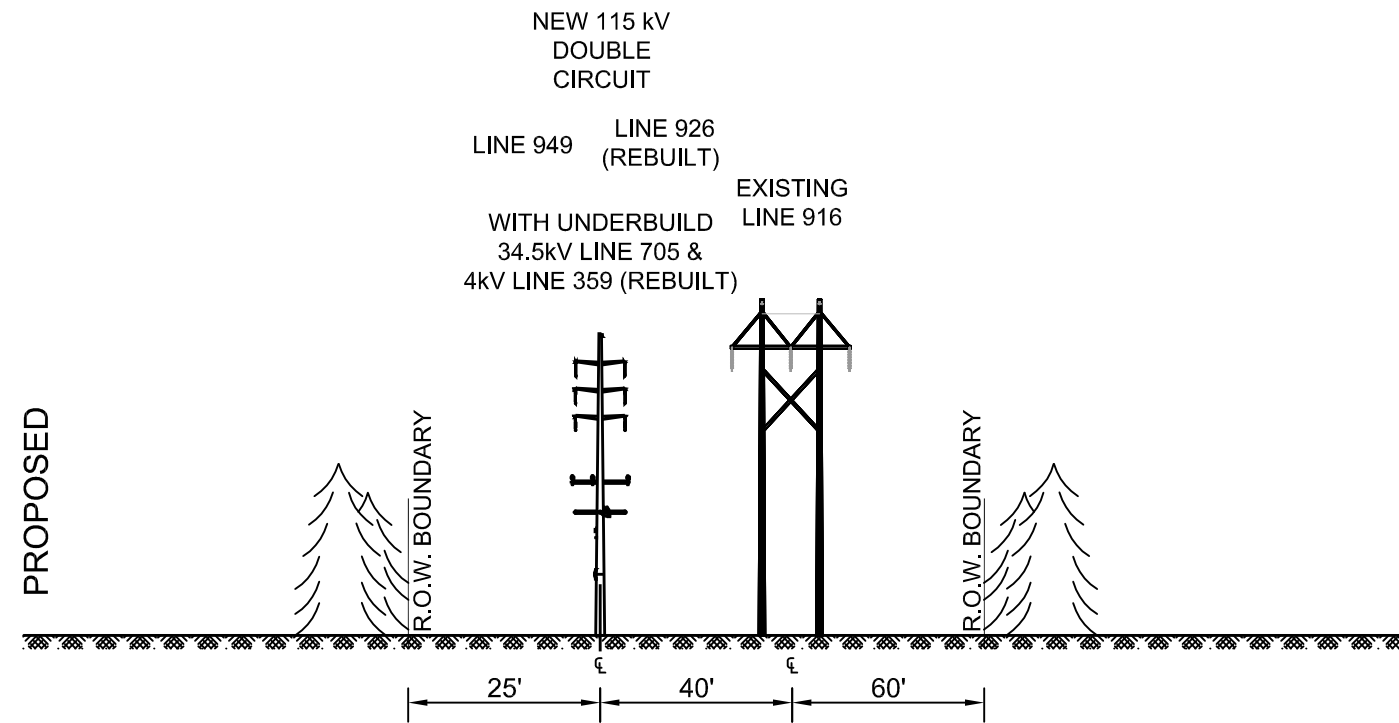
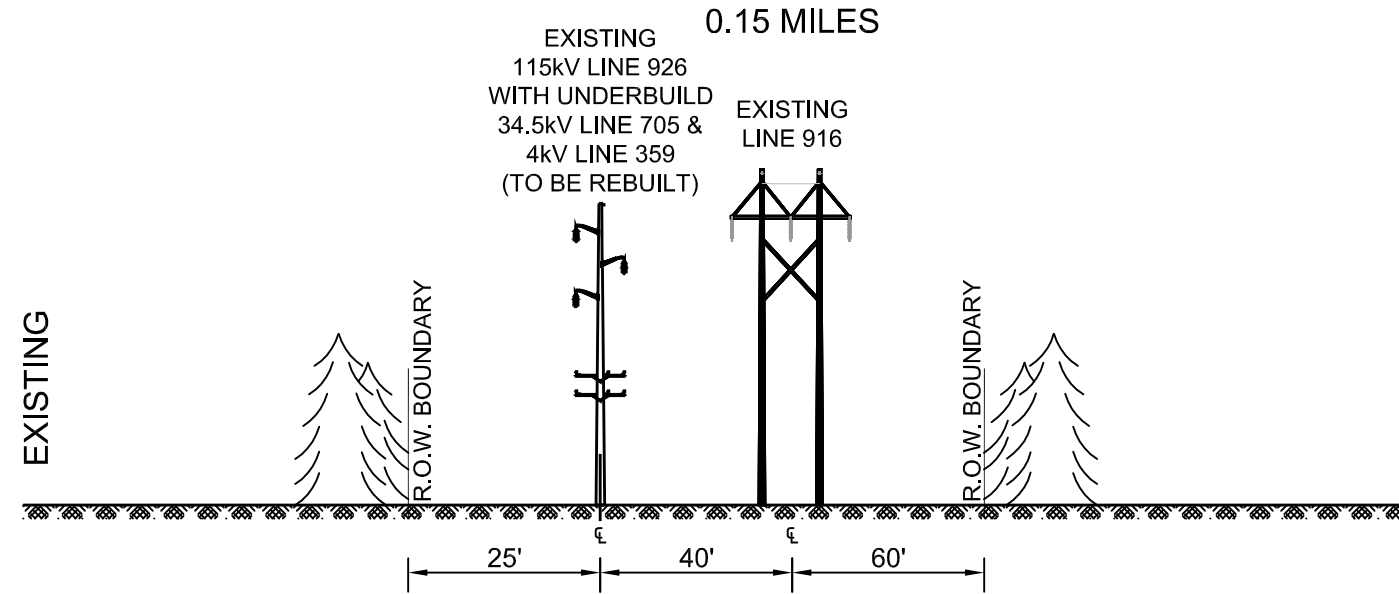
ANSI B

| | | | | | | | |
|---|----------------------|------------------------|---|---|------------------|---------------|---------------------------|
| Figure 5-2 Cross Sections Rochester Transmission Project Enhancement Monroe County, NY | OWNER ENGINEER: | APPROVAL STAMP: | PE Stamp AVANGRID ENGINEERING CONFIDENTIAL, PROPRIETARY and TRADE SECRET INFORMATION Property of AVANGRID | 115 kV LINE 949 SECTION 6 (LOOKING TOWARD STATION 48) ROCHESTER | | | |
| | DRAWING PREPARED BY: | ACCEPTED BY OE: | | DR. | RSH | SCALE: N/A | FILE: R0001-T949-6005.dwg |
| | | | | CK. | MSP | NO. | |
| | | | | APP. | | | |
| | REV. | DATE | BY | DESCRIPTION | APP. | DATE: 8/14/19 | |
| | | 0-0A | 8/14/19 | MLEC | ISSUE FOR REVIEW | | |
| | | R0001-T949-6005 | | | | REV. 0-0A | |

SEGMENT

LINE 926 & 916 CORRIDOR TO BUFFALO RD CROSSING

0.15 MILES



CADD Drawing, DO NOT REVISE MANUALLY.

ANSI B

**Figure 5-2
Cross Sections**

Rochester Transmission Project Enhancement
Monroe County, NY

OWNER ENGINEER:

APPROVAL STAMP:

DRAWING PREPARED BY:

ACCEPTED BY OE:

PE Stamp

AVANGRID ENGINEERING
CONFIDENTIAL, PROPRIETARY and TRADE SECRET INFORMATION
Property of AVANGRID



**115 kV LINE 949
SECTION 7**

(LOOKING TOWARD STATION 48)

ROCHESTER

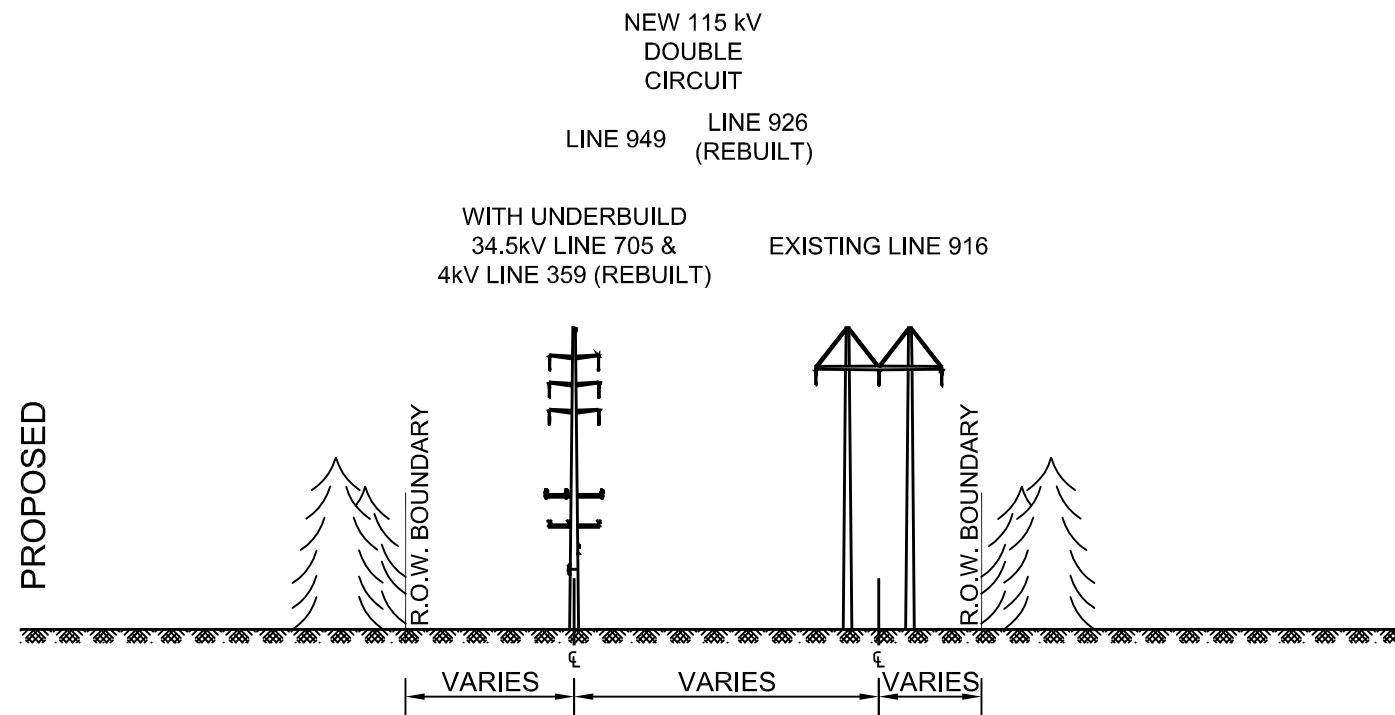
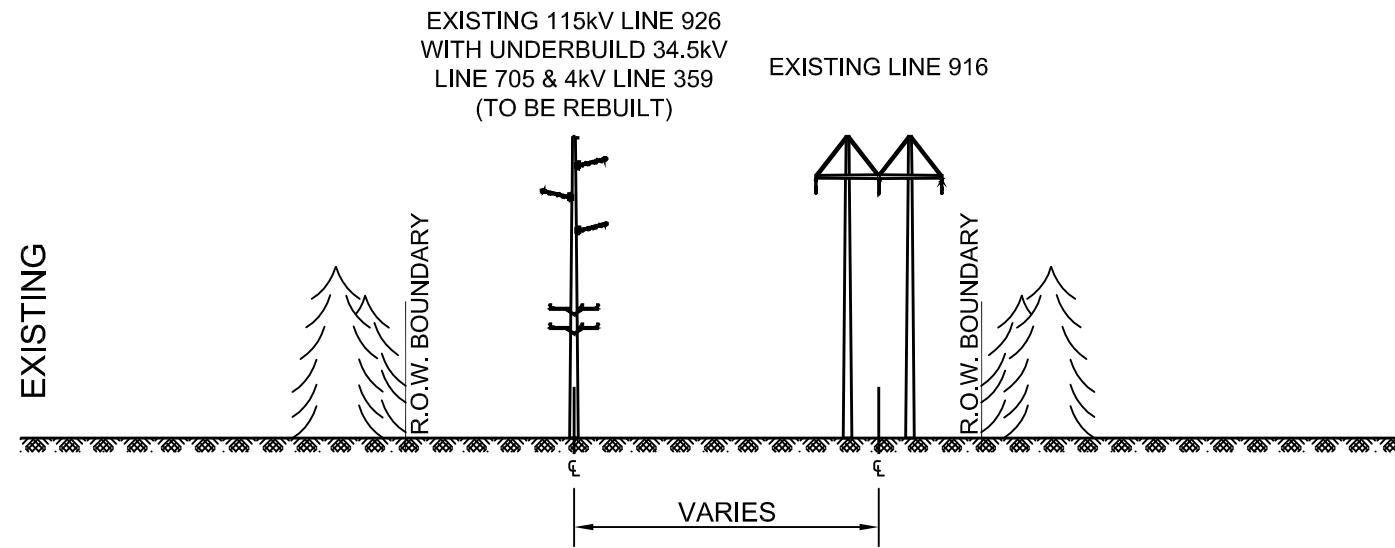
| | | | |
|-------|---------|------------------------|---------------------------|
| DR. | RSH | SCALE: N/A | FILE: R0001-T949-6006.dwg |
| CK. | MSP | R0001-T949-6006 | |
| APP. | | | |
| DATE: | 8/14/19 | | REV. 0-0A |

| REV. | DATE | BY | DESCRIPTION | APP. |
|------|---------|------|------------------|------|
| 0-0A | 8/14/19 | MLEC | ISSUE FOR REVIEW | |

SEGMENT

BUFFALO RD CROSSING TO LINE 916 CROSSING (EAST OF MCKEE RD)

0.39 MILES



*THE SEGMENT BETWEEN THE BUFFALO ROAD CROSSING AND THE MCKEE ROAD CROSSING, A DISTANCE OF 0.32 MILES, IS LOCATED ON RG&E FEE OWNED PROPERTY. THE SEGMENT BETWEEN THE MCKEE ROAD CROSSING AND THE LINE 916 UNDERCROSSING, A DISTANCE OF 0.07 MILES, IS LOCATED ON PROPERTY OWNED BY BODYCOTE THERMAL PROCESSING WITH RG&E PROPOSING A 50' ROW WIDTH ACROSS THIS PROPERTY.

CADD Drawing, DO NOT REVISE MANUALLY.

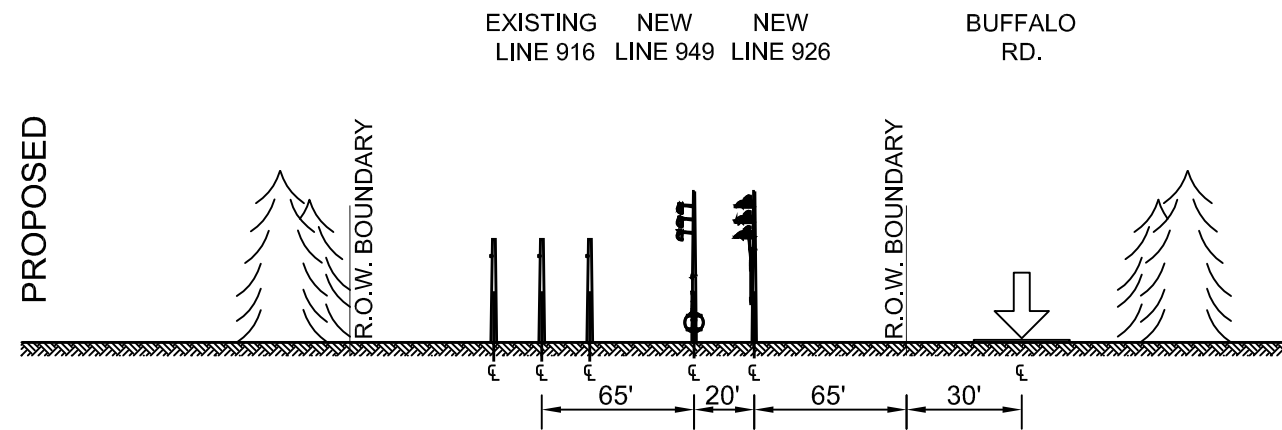
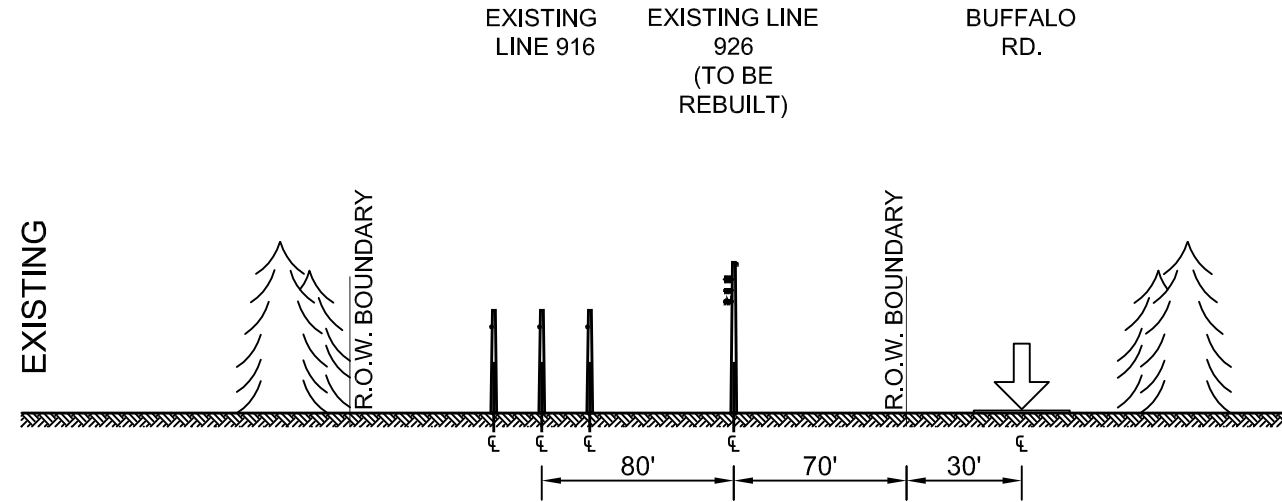
ANSI B

| | | | | | | | | | | | | | |
|---|----------------------|-----------------|--|---|--|-------------|--|------|--|---------------|--|-----------|--|
| Figure 5-2 Cross Sections Rochester Transmission Project Enhancement Monroe County, NY | OWNER ENGINEER: | APPROVAL STAMP: | PE Stamp <div style="text-align: center; font-weight: bold; font-size: small;"> AVANGRID ENGINEERING CONFIDENTIAL, PROPRIETARY and TRADE SECRET INFORMATION Property of AVANGRID </div> | 115 kV LINE 949 SECTION 8 (LOOKING TOWARD STATION 48) | | | | | | | | | |
| | DR. RSH CK. MSP | | | SCALE: N/A FILE: R0001-T949-6007.dwg | | ROCHESTER | | | | | | | |
| | DRAWING PREPARED BY: | | | ACCEPTED BY OE: | | NO. | | | | | | | |
| | 0-0A | | | 8/14/19 | | MLC | | | | | | | |
| REV. | | DATE | | BY | | DESCRIPTION | | APP. | | DATE: 8/14/19 | | REV. 0-0A | |

SEGMENT

LINE 916 CROSSING (EAST OF MCKEE RD) TO ROCHESTER & SOUTHERN RR CROSSING

0.09 MILES



CADD Drawing, DO NOT REVISE MANUALLY.

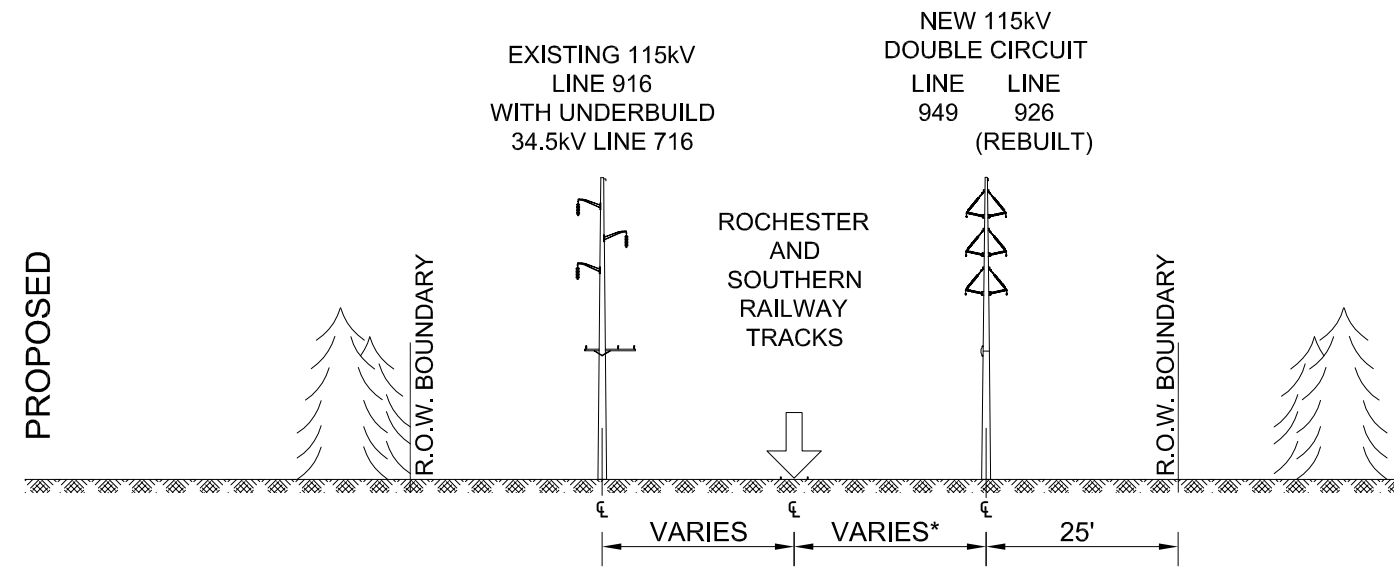
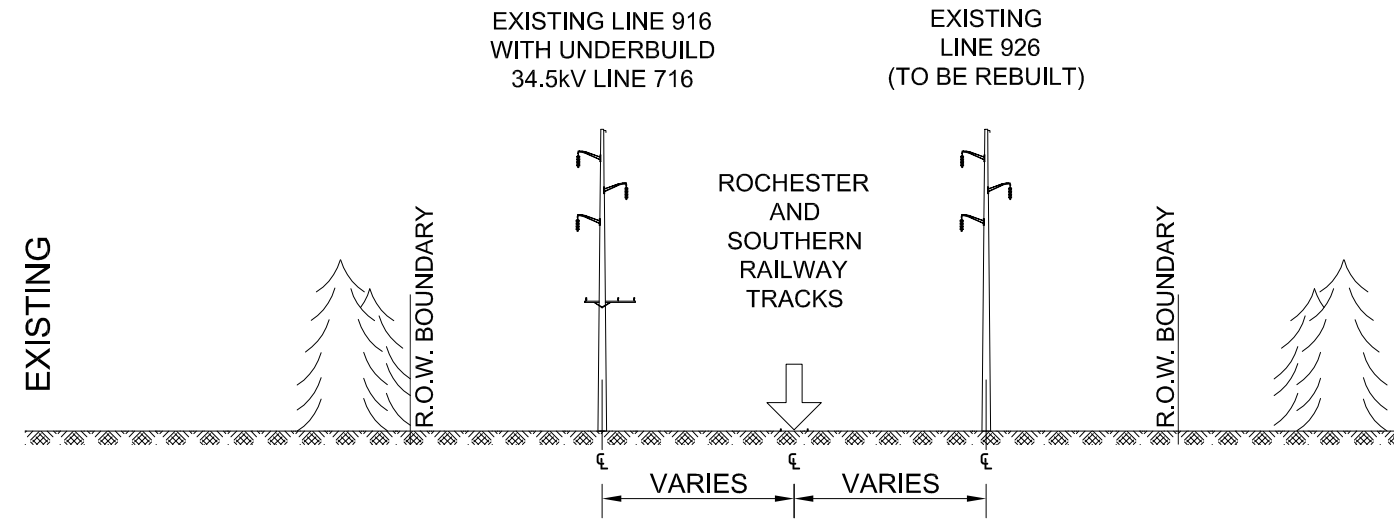
ANSI B

| | | | | | | | |
|---|----------------------|-----------------|---|---|-------|------------|---------------------------|
| Figure 5-2 Cross Sections Rochester Transmission Project Enhancement Monroe County, NY | OWNER ENGINEER: | APPROVAL STAMP: | PE Stamp AVANGRID ENGINEERING CONFIDENTIAL, PROPRIETARY and TRADE SECRET INFORMATION Property of AVANGRID | 115 kV LINE 949 SECTION 9 (LOOKING TOWARD STATION 48) | | | |
| | DRAWING PREPARED BY: | ACCEPTED BY OE: | | ROCHESTER | | | |
| | | | | DR. | RSH | SCALE: N/A | FILE: R0001-T949-6008.dwg |
| | | | | CK. | MSP | NO. | R0001-T949-6008 |
| | | | | APP. | | | |
| REV. | DATE | BY | DESCRIPTION | APP. | DATE: | 8/14/19 | |

SEGMENT

ROCHESTER & SOUTHERN RR CROSSING TO FERRANO ST CROSSING

1.24 MILES



*THE DISTANCE FROM THE TRANSMISSION CENTERLINE TO THE R&S RR VARIES, EITHER EXCEEDING R&S'S REQUIREMENT OF 25' BETWEEN RAIL CENTERLINE TO EDGE OF POLE/FOUNDATION OR AS MUCH AS POSSIBLE DUE TO AVAILABLE ROW.

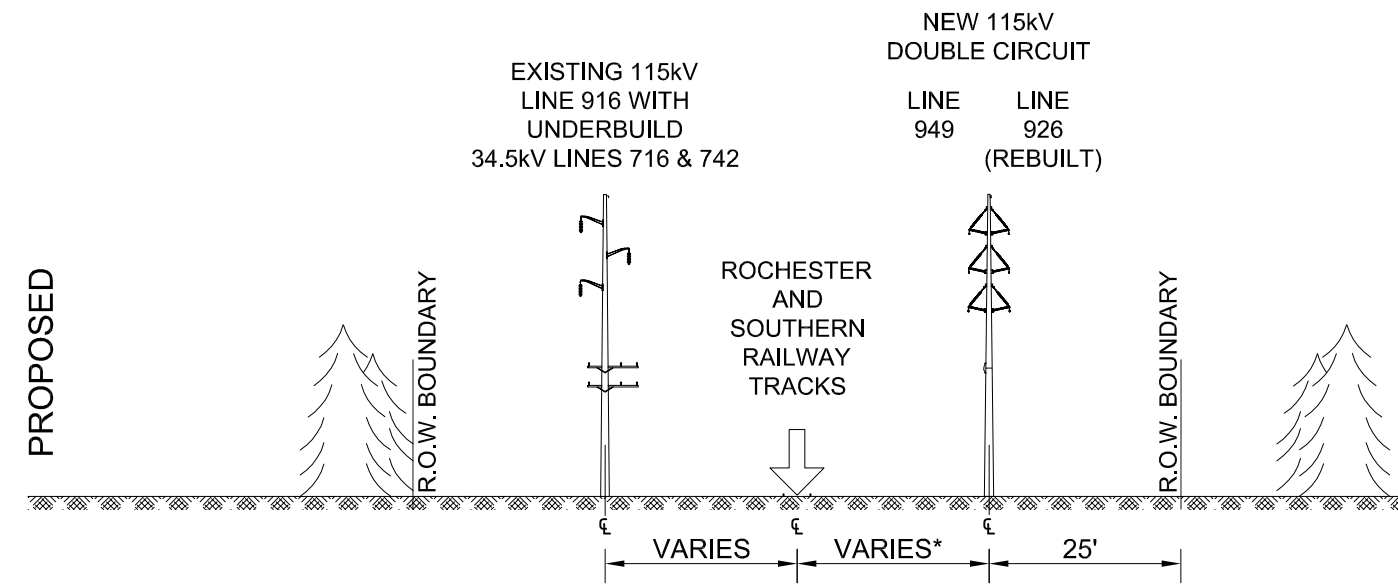
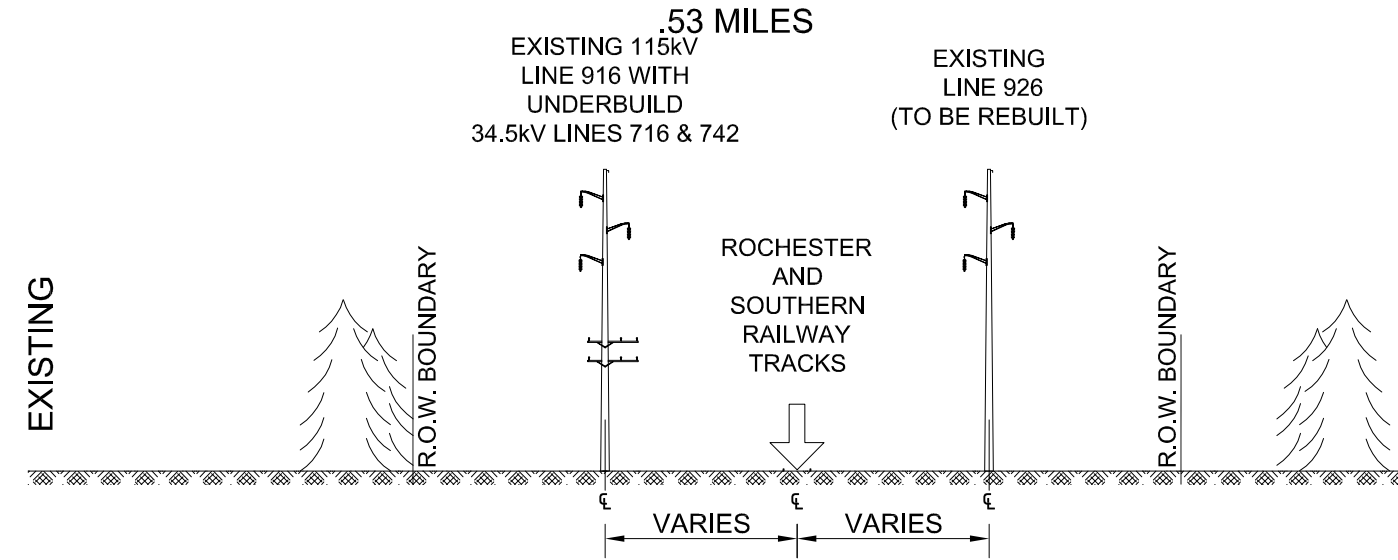
CADD Drawing, DO NOT REVISE MANUALLY.

ANSI B

| | | | | | | | | | | |
|---|----------------------|-----------------|---|--|-----|-------------|------------|---------------------------|------------------------|------|
| Figure 5-2 Cross Sections Rochester Transmission Project Enhancement Monroe County, NY | OWNER ENGINEER: | APPROVAL STAMP: | PE Stamp AVANGRID ENGINEERING CONFIDENTIAL, PROPRIETARY and TRADE SECRET INFORMATION Property of AVANGRID | 115 kV LINE 949 SECTION 10 (LOOKING TOWARD STATION 48) | | | | | | |
| | DRAWING PREPARED BY: | ACCEPTED BY OE: | | | DR. | RSH | SCALE: N/A | FILE: R0001-T949-6009.dwg | | |
| | | | | | CK. | MSP | NO. | REV. | | |
| | | | REV. | DATE | BY | DESCRIPTION | APP. | DATE: 8/14/19 | R0001-T949-6009 | 0-0B |

SEGMENT

FERRANO ST CROSSING TO TWO SPANS NORTH OF EMERSON ST



*THE DISTANCE FROM THE TRANSMISSION CENTERLINE TO THE R&S RR VARIES, EITHER EXCEEDING R&S'S REQUIREMENT OF 25' BETWEEN RAIL CENTERLINE TO EDGE OF POLE/FOUNDATION OR AS MUCH AS POSSIBLE DUE TO AVAILABLE ROW.

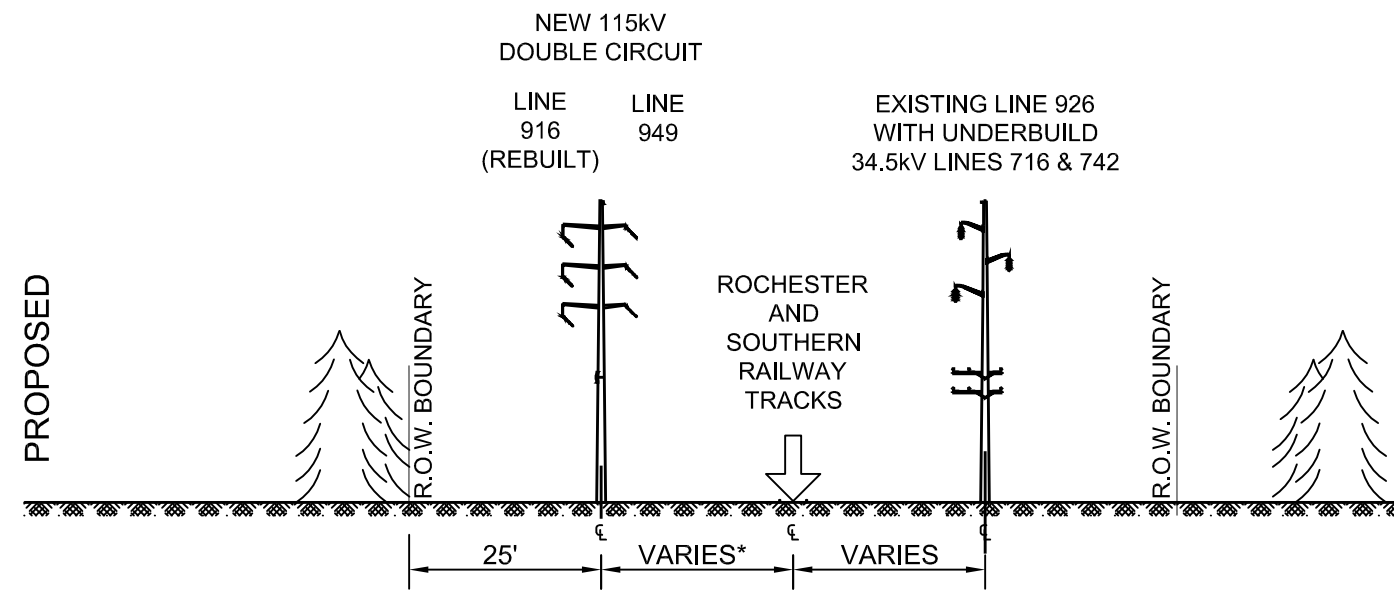
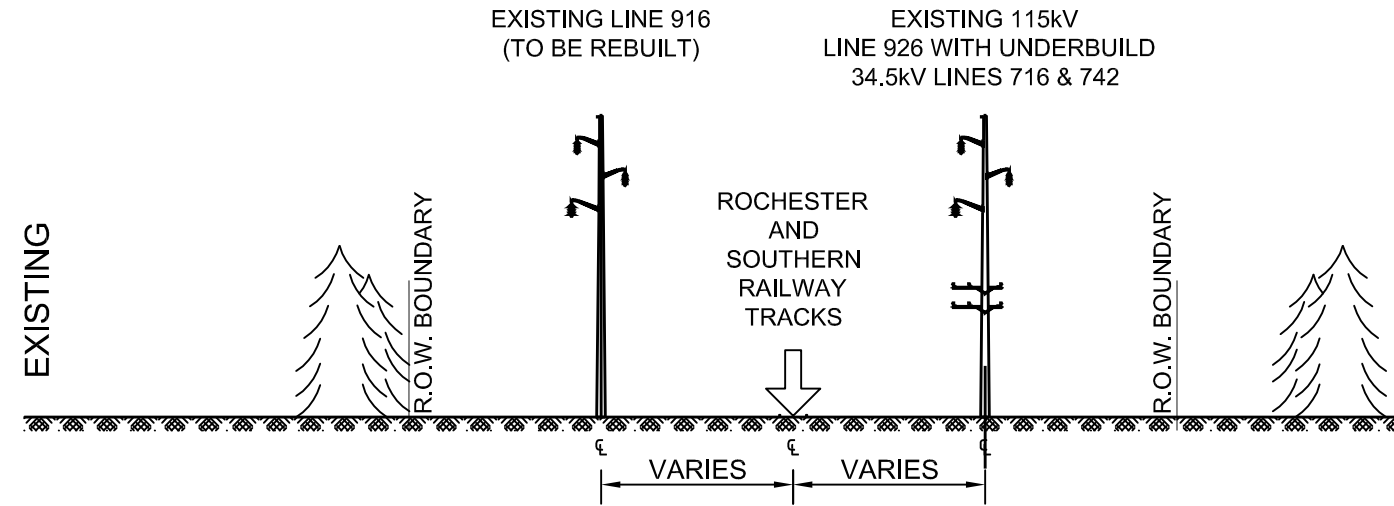
CADD Drawing, DO NOT REVISE MANUALLY.

ANSI B

| | | | | | | | | |
|---|----------------------|------------------------------------|---|--|--|-------------------|---------------------------|-----------|
| Figure 5-2 Cross Sections Rochester Transmission Project Enhancement Monroe County, NY | OWNER ENGINEER: | APPROVAL STAMP: | PE Stamp AVANGRID ENGINEERING CONFIDENTIAL, PROPRIETARY and TRADE SECRET INFORMATION Property of AVANGRID | | 115 kV LINE 949 SECTION 11 (LOOKING TOWARD STATION 48) | | | |
| | DRAWING PREPARED BY: | ACCEPTED BY OE: | | | ROCHESTER | | | |
| | | | | | DR. RSH CK. MSP APP. DATE: 8/14/19 | SCALE: N/A NO. | FILE: R0001-T949-6010.dwg | REV. 0-0B |
| | | REV. DATE BY DESCRIPTION APP. | 0-0B 10/21/19 MLEC ISSUE FOR REVIEW | | | | | |
| | | 0-0A 8/14/19 MLEC ISSUE FOR REVIEW | | | | | | |

SEGMENT

TWO SPANS NORTH OF EMERSON ST TO TWO SPANS EAST OF MT READ BLVD
.21 MILES



*THE DISTANCE FROM THE TRANSMISSION CENTERLINE TO THE R&S RR VARIES, EITHER EXCEEDING R&S'S REQUIREMENT OF 25' BETWEEN RAIL CENTERLINE TO EDGE OF POLE/FOUNDATION OR AS MUCH AS POSSIBLE DUE TO AVAILABLE ROW.

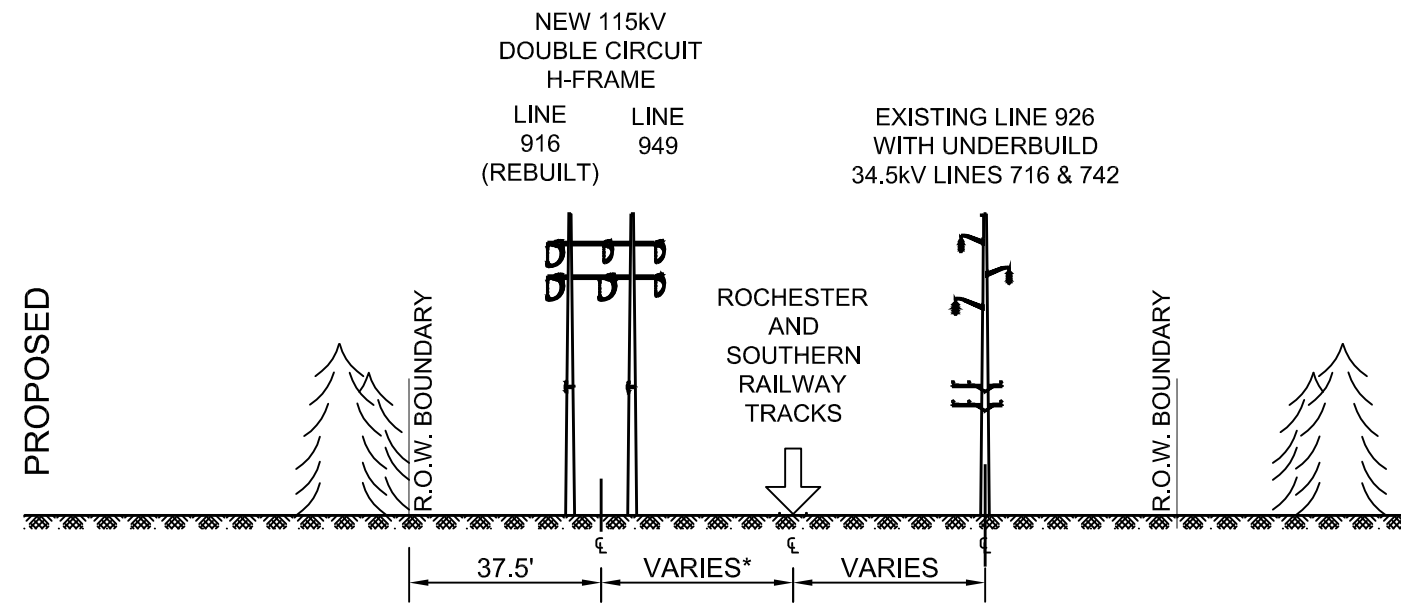
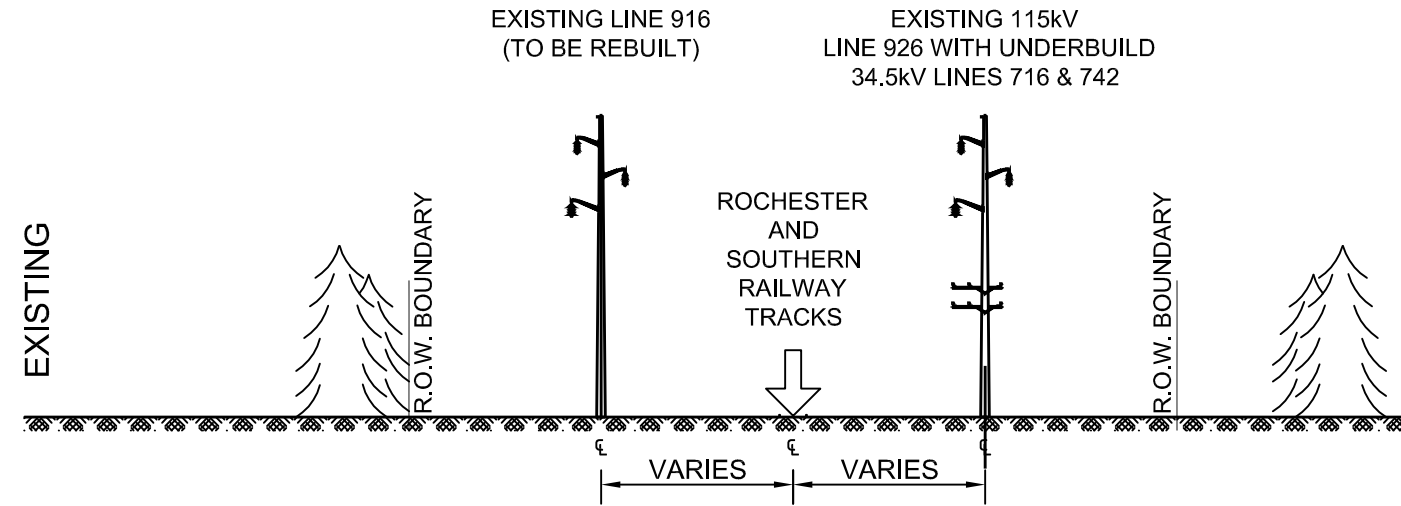
CADD Drawing, DO NOT REVISE MANUALLY.

ANSI B

| | | | | | | | |
|---|----------------------|-----------------|---|--|---------------|---------------------------|------|
| Figure 5-2 Cross Sections Rochester Transmission Project Enhancement Monroe County, NY | OWNER ENGINEER: | APPROVAL STAMP: | PE Stamp AVANGRID ENGINEERING CONFIDENTIAL, PROPRIETARY and TRADE SECRET INFORMATION Property of AVANGRID | 115 kV LINE 949 SECTION 12 (LOOKING TOWARD STATION 48) | | | |
| | DRAWING PREPARED BY: | ACCEPTED BY OE: | | ROCHESTER | | | |
| | | | | DR. RSH | SCALE: N/A | FILE: R0001-T949-6011.dwg | REV. |
| | | | | CK. MSP | NO. | R0001-T949-6011 | 0-0A |
| REV. | DATE | BY | DESCRIPTION | APP. | DATE: 8/14/19 | | |

SEGMENT

TWO SPANS EAST OF MT READ BLVD TO STATION 48
.19 MILES



*THE DISTANCE FROM THE TRANSMISSION CENTERLINE TO THE R&S RR VARIES WITH 20 AND 25 FEET BETWEEN RAIL CENTERLINE TO EDGE OF POLE/FOUNDATION

CADD Drawing, DO NOT REVISE MANUALLY.

ANSI B

| | | | | | | | | | | | |
|---|----------------------|-----------------|---|---------|--|------------------|------|---------------|------------|---------------------------|------|
| Figure 5-2 Cross Sections Rochester Transmission Project Enhancement Monroe County, NY | OWNER ENGINEER: | APPROVAL STAMP: | PE Stamp AVANGRID ENGINEERING CONFIDENTIAL, PROPRIETARY and TRADE SECRET INFORMATION Property of AVANGRID | | 115 kV LINE 949 SECTION 13 (LOOKING TOWARD STATION 48) | | | | | | |
| | DRAWING PREPARED BY: | ACCEPTED BY OE: | | | ROCHESTER | | | | | | |
| | | | 0-0A | 8/14/19 | MLEC | ISSUE FOR REVIEW | DR. | RSH | SCALE: N/A | FILE: R0001-T949-6011.dwg | REV. |
| | | | REV. | DATE | BY | DESCRIPTION | APP. | DATE: 8/14/19 | NO. | R0001-T949-6012 | 0-0A |